

# **A REQUEST FOR PROPOSAL FOR PROFESSIONAL SERVICES CONTRACT**

Department of Highways  
Professional Services Procurement Bulletin 2026-02  
Rowan | 9-80307 | KY-32

This document constitutes a Request for Proposals for a Professional Service Contract from qualified individuals and organizations to furnish those services as described herein for the Commonwealth of Kentucky, Department of Highways.

## **I. PROJECT DESCRIPTION**

County - Rowan  
Route - KY-32  
Item No. - 9-80307.00  
Project Description - Improve safety and reduce congestion on KY-32 (Flemingsburg Road) between the intersections of CS-1203 (Trademore Drive) and CS-1001 (Fraley Drive) and in the vicinity of the I-64 interchange.

## **II. PROJECT INFORMATION**

Project Manager - Michael Read, P.E.  
User Division - Highway Design  
Approximate Fee - \$750,000 Preliminary Engineering & Environmental Services (Lump Sum)  
Project Funding - SPP (State Funded for Design Phase)  
Project Length - Approximately 0.45 miles

## **III. PURPOSE AND NEED**

The purpose of this project is to reduce congestion and improve safety at the I-64 interchange with KY 32 in Morehead. Based on traffic forecasts this area is expected to experience significant growth with the Eastbound I-64 ramps intersection expected to operate at a LOS E by 2030 during the PM peak hour. Between 2017 and 2021 there were 128 collisions at the interchange with rear ends being the most common type (83, 65 percent) indicating congestion could be a contributing factor.

## **IV. DBE GOAL**

The Consultant team may include a DBE Participation Plan with their Response to Announcement to help the Department meet the 11.95% DBE goal established by FHWA. The plan would demonstrate how DBE companies will be mentored or used to assist in the area(s) pertaining to this contract. If included, an additional page will be allowed in the Project Approach (Section 7) to exhibit this plan. No additional points will be provided in the Evaluation Factors for the DBE Participation Plan.

## **V. SCOPE OF WORK**

The selected Consultant will be required to provide engineering services to perform Preliminary Engineering and Environmental Services for the recommended alternative in the Planning Study. This will include an Interchange Modification Report if required. The development of other alternatives will also be considered that meet the purpose and need of the project.

This project may be advanced to Final Design upon the completion of Preliminary Engineering with a Contract Modification. The selected Consultant will then be required to provide engineering services to perform Final Roadway and Structural Design, including the preparation of any design studies, drainage design, right-of-way plans, construction plans, traffic control plans, and cost estimates as well as any other services that KYTC chooses not to perform with in-house forces.

## **VI. SPECIAL INSTRUCTIONS**

The Department may retain any of the advertised services to be performed by in-house state forces.

Instructions for Response to Announcement can be found at:

<https://transportation.ky.gov/ProfessionalServices/Pages/Respond-to-an-Announcement.aspx>

## **VII. AVAILABLE STUDIES**

[Corridor Study | Final Report - Rowan | 9-80307 | KY-32](#)

## **VIII. METHOD OF DESIGN**

The selected Consultant shall utilize the most recent CADD Standards for Highway Plans Policy in the development of the highway plans. Refer to the 2022 CADD Standards for ORD V4.4 Project Development Memo for information pertaining to the latest CADD Standards and plan submittal.

## **IX. ENVIRONMENTAL SERVICES**

Any necessary Environmental Services are expected to be provided by the Consultant. Based on preliminary discussion with the project team and all currently available environmental information for the proposed project location, we anticipate the required environmental document to be no higher than a Categorical Exclusion Level 1. The final environmental document may be elevated (or reduced) to a different level of environmental documentation if environmental investigation leads to an alternative conclusion or changes in ROW occur. Prequalification of various Environmental Services are required to be identified in the Consultant's Response to Announcement.

## **X. PHOTOGRAMMETRIC SERVICES**

The Consultant will provide mapping and will furnish manuscripts in ORD format. Statewide Elevation data and Aerial photography can be found at the following link [KyFromAbove - Kentucky's Aerial Photography & Elevation Data Program](#). The selected Consultant shall

supplement this information with conventional surveying as determined during project scoping.

## **XI. STRUCTURE DESIGN**

Structure Design is not anticipated for Preliminary Design. When the project advances to Final Design and if the selected Consultant is retained for Final Design services, the selected Consultant shall do the necessary engineering services to submit to the KYTC an Advanced Situation Folder(s) for the appropriate structure(s). The selected Consultant may be responsible for any necessary Structure Design services. Structure Design of the proposed structure(s) may be added as a Contract Modification. Prequalification in the area of Structure Design is not required to be identified in the Consultant's Response to Announcement.

## **XII. GEOTECHNICAL SERVICES**

The selected Consultant may provide all Geotechnical Services required for the project. The Preliminary Design contract may include preliminary geotechnical services to review available geological, mining, or other geotechnical information that could influence the selection of the preferred alternate. Geotechnical services necessary for the completion of Final Design may be added by contract modification at the appropriate time. At any time, if the Department has the capacity to provide these services, the Department may retain the advertised geotechnical services. Prequalification in the area of Geotechnical Services is not required to be identified in the Consultant's Response to Announcement.

## **XIII. TRAFFIC ENGINEERING**

The selected Consultant will provide the analysis of the existing and proposed operations. Traffic Signal Design and Lighting Design services, if necessary for the completion of Final Design, may be added by Contract Modification at the appropriate time. At any time, if the Department has the capacity to provide these services, the Department may retain the advertised traffic services.

## **XIV. UTILITIES**

The Department is responsible for providing available information on existing utility facility locations to support the determination of conflicts of the project design with the existing utility facilities. The Department shall cooperatively support the identification of these conflicts. The Consultant shall consider the practical feasibility of utility conflict avoidance, making the necessary adjustments when directed by the Department. Those conflicts determined as unavoidable shall be addressed by the entity charged with utility coordination, be it the Department or Consultant.

The selected Consultant shall acquire adequate information regarding existing utility features to identify existing utility facilities within the project area, document and confirm those that may be negatively impacted by the project. The selected Consultant shall bring attention any potential conflicts with existing utility facilities that may result in significant cost or time to relocate. The selected Consultant will complete or contribute to a utility conflict matrix, documenting the existing utility facilities that may be impacted by the project. The Consultant shall document or confirm the following for each utility in the conflict matrix: type of utility, owner of utility, quantify the extent they may be impacted, potential impacts to project budget, potential impact to project schedule, confidence of utility location depicted, and recommendations for remedy.

The selected Consultant shall provide a project location map to the Department. The Department will send project location maps to all potential utility contacts to determine whether they may have existing utilities within these project limits. The Department will develop the utility contact list. Facility location maps received for this project will be provided to the selected Consultant.

All utilities including underground and overhead facilities within the project scope shall be field-verified by the Consultant. Sizes and types of underground and aerial utilities shall be identified on the plans for each alignment alternative in the PL&G submittal. In addition to survey horizontal location of visible utility features, the Consultant shall provide elevation of accessible manhole tie inverts and overhead low wire elevation.

The selected Consultant may be required to provide utility related services for this project, which may include utility coordination, construction inspection, or specific facility type utility design. These services have specific prequalification standards, required of the selected consultant or subconsultant.

The selected Consultant will provide SUE (Subsurface Utility Engineering) work as needed to field-locate utilities. Horizontal and vertical location of existing utilities shown in the roadway plans shall be adjusted by the Consultant as necessary to reflect actual SUE results. This service has a specific prequalification standard, required of the selected consultant or subconsultant.

## **XV. PREQUALIFICATION REQUIREMENTS**

To respond to this project the Consultant must be prequalified in the following areas by the response due date of this advertisement:

### **ENVIRONMENTAL & UST SERVICES**

- UST & Hazmat Preliminary Site Assessment (Phase 1)
- UST Site Investigation (Phase 2)
- *UST Closure Assessment\* (see note below)*
- *Hazmat Corrective Action\* (see note below)*
- *Hazmat Site Investigation (Phase 2)\* (see note below)*
- *UST Corrective Action\* (see note below)*

### **ENVIRONMENTAL AQUATIC & TERRESTRIAL ECOSYSTEMS ANALYSIS**

- Fisheries
- Botany
- Terrestrial Zoology
- Wetlands
- Freshwater Macroinvertebrates
- Water Quality

### **ENVIRONMENTAL ARCHAEOLOGY & OTHER SERVICES**

- Air Quality Analysis
- Prehistoric Archaeology
- Socio-Economic Analysis
- Highway Noise Analysis
- Historic Archaeology
- Environmental Document Writing & Coordination

- Cultural-Historic Analysis
- *Stream & Wetland Mitigation\** (see note below)

#### ROADWAY DESIGN

- Rural Roadway Design
- Surveying
- Urban Roadway Design

#### TRAFFIC ENGINEERING

- Electrical Engineering Roadway Lighting
- Traffic Engineering
- Electrical Engineering Traffic Signals

#### Geotechnical Services\* (see note below)

- *Geotechnical Engineering\**
- *Geotechnical Drilling\**
- *Geotechnical Laboratory Testing\**

#### Structure Design\* (see note below)

- *Standard Structures\**
- *Spans Under 500 Feet\**

#### Transportation Planning\* (see note below)

- *Pedestrian & Bicycle Planning & Design\**

#### Utility Design\* (see note below)

- *Utility Preconstruction Coordination\**

*\* Note – These prequalifications are not required with the initial proposal as it is uncertain to the extent practicable if they are necessary. Should these services become necessary during the delivery of the project in this or future phases, the selected Consultant team must obtain the required qualifications before providing those services or bring on a prequalified subconsultant at that time.*

## **XVI. PROCUREMENT SCHEDULE**

Dates other than Response Date are tentative and provided for information only.

- |                            |  |
|----------------------------|--|
| • Advertisement Date:      | August 12, 2025                                  |
| • Response Date:           | September 3, 2025 by 4:30 PM ET (Frankfort Time) |
| • First Selection Meeting: | September 8, 2025                                |
| • Final Selection:         | September 24, 2025                               |
| • Pre-Design Conference:   | October 1, 2025                                  |
| • Consultant Fee Proposal: | October 10, 2025                                 |
| • Contract Negotiations:   | October 22, 2025                                 |
| • Notice to Proceed:       | November 12, 2025                                |

## **XVII. PROJECT SCHEDULE**

- |  |                |
|--|----------------|
| • Preliminary Alternate Review Meeting | March 13, 2026 |
| • Preliminary Line & Grade Inspection  | June 15, 2026  |

- Submit Design Executive Summary August 15, 2026
- Environmental Document August 15, 2026

### **XVIII. EVALUATION FACTORS**

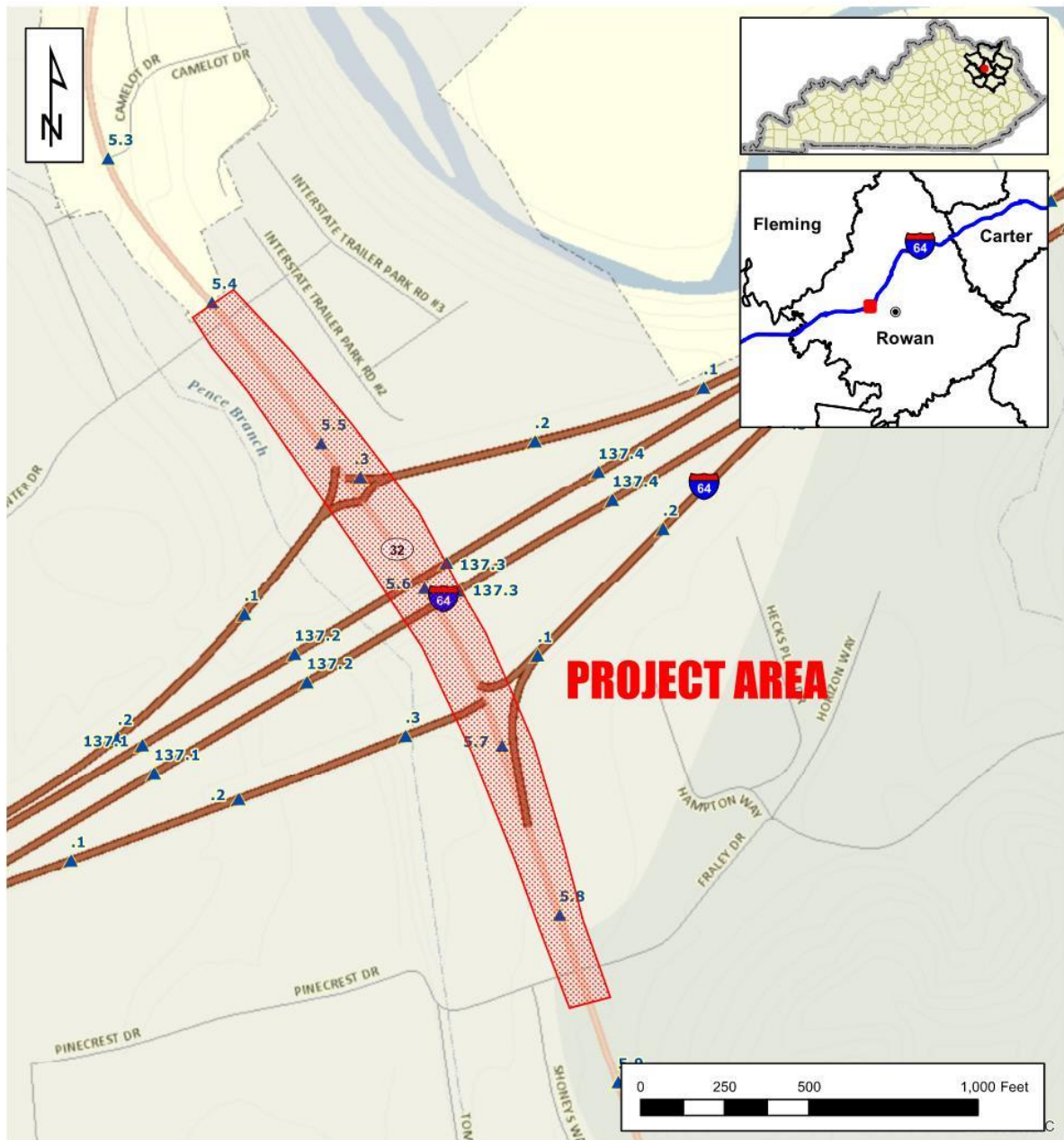
Consultants will be evaluated by the selection committee based on the following weighted factors:

1. Project approach and proposed procedures to accomplish the services for the project. (20 Points)
2. Relative experience of consultant personnel assigned to project team with highway projects for KYTC and/or federal, local or other state governmental agencies. (15 Points)
3. Past record of performance on projects similar in type and complexity. (15 Points)
4. Capacity to comply with project schedule. (10 Points)
5. The Consultant demonstrates a comprehensive understanding of safety strategies and the ability to generate meaningful ideas that can measurably enhance the safety of the completed project. This includes both the immediate effectiveness and the long-term safety impacts of the finished facility. (10 Points)
6. Knowledge of the locality and familiarity of the general geographic area. (2 Points)

### **XIX. SELECTION COMMITTEE MEMBERS**

1. Michael Read, P.E., User Division
2. Karl Sawyer, P.E., User Division
3. Crystal Mapel, P.E., Secretary's Pool
4. Matthew Sipes, P.E., Secretary's Pool
5. Marcelyn Mathews, P.E., Governor's Pool

XX. AREA MAP



Rowan County  
Item No. 9-80307  
KY 32  
Flemingsburg Road

Disclaimer: KYTC provides this map as a reference only. Users are to validate information independently.  
Copyright: 2025 Kentucky Transportation Cabinet. All rights reserved.

Date: 7/22/2025 